

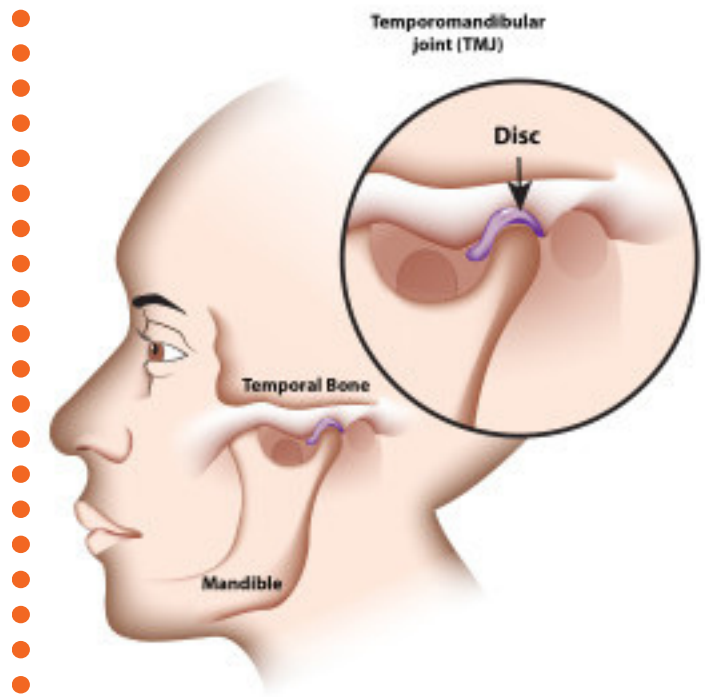


# TEMPOROMANDIBULAR DISORDERS

Episode 16.1

## ANATOMY

- Muscles of mastication: temporalis, masseter, pterygoids
- Innervated by CN V (trigeminal nerve)
- Temporal and mandible separated by cartilaginous disc (meniscus)



## TMD VS. TMJ

- Temporomandibular disorders covers broad range of diseases affecting the temporomandibular joint and areas extrinsic to joint
- TMJ disorder implies intra-articular pathology and dysfunction

## MYOFASCIAL PAIN DISORDERS

- MUSCLE SPASM
- MYOSITIS
- CONTRACTURE

Secondary to autoimmunity: SLE, SCLERODERMA

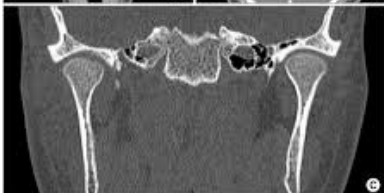
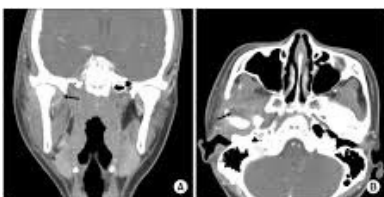
## INTERNAL DERANGEMENTS

- DISC DISPLACEMENT
- OSTEOARTHRITIS
- ANKYLOSIS
- CONGENITAL / DEVELOPMENTAL DEFORMITIES (over- or undergrowth of the mandible)
- FRACTURES
- NEOPLASMS
- ?PSYCHOSOCIAL

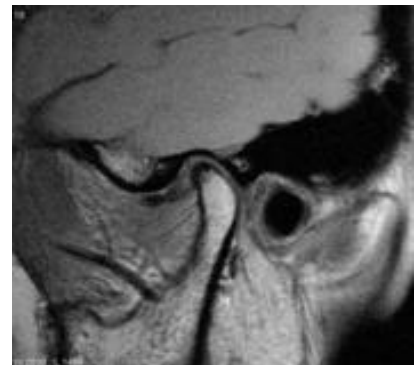
- Cardinal sign is jaw clicking / crepitus

## ASSESSMENT

MRI - best for joint space pathology



CT - best for joint space pathology



## TREATMENT

NSAIDs, oral appliance



Surgery - arthroscopy, arthotomy, arthrocentesis